

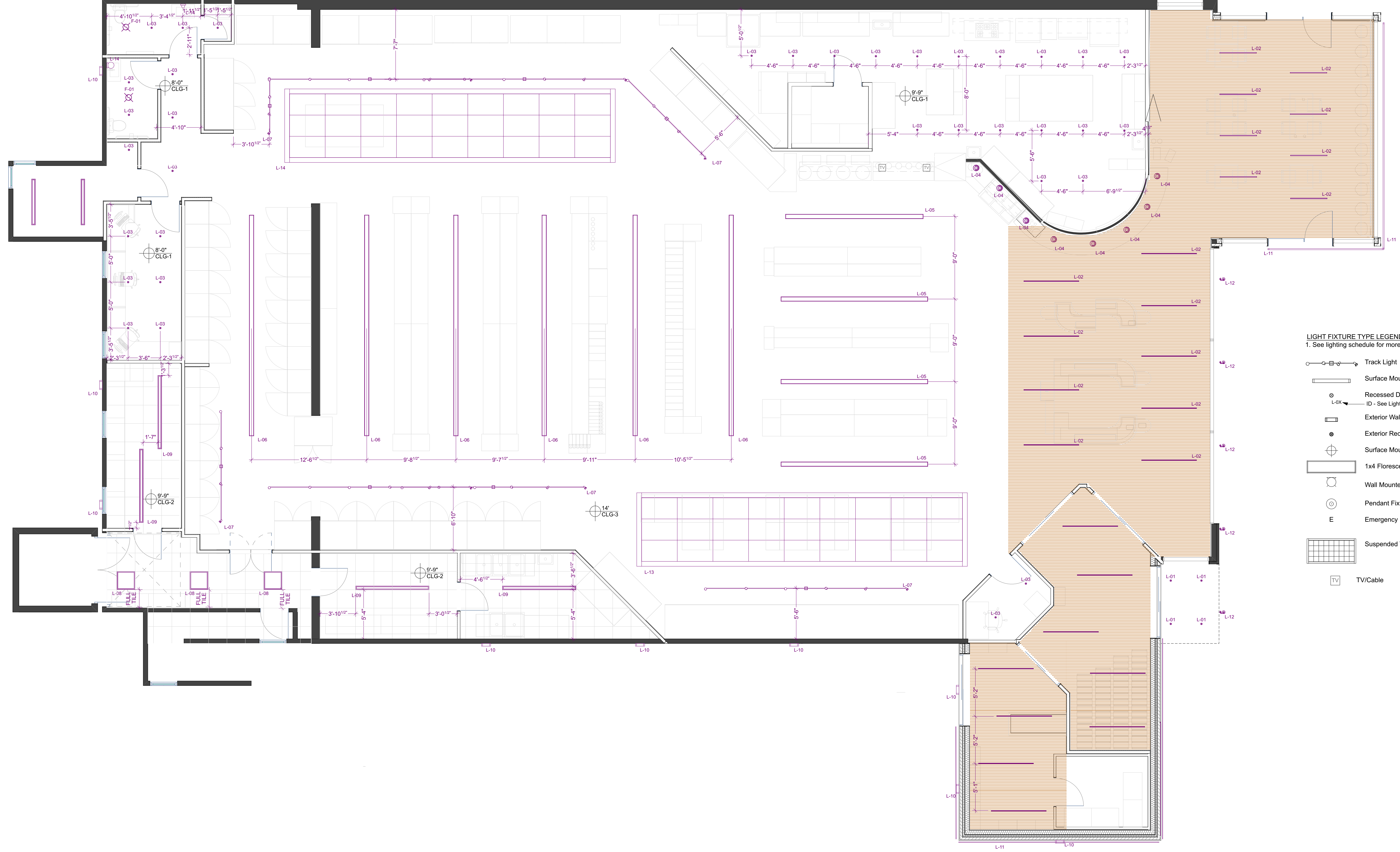
GENERAL NOTES:

1. Contractor will review all drawings and specifications and confirm any unclear information with the Architect before proceeding. Sheets are not to be separated when distributed to subcontractors in order to maintain contextual information.
2. Contractor is responsible for the construction of a complete weather tight building within the scope of the construction documents. If contractor feels conformance with the construction documents is in conflict with this goal he shall discuss conflicts with Architect.
3. Contractor is responsible for coordinating and supervising all sub-contractors. Workmanship standards shall be those generally accepted for high-end construction. Contractor warrants all work for a minimum of one year from final completion of job. Other explicit warranties may be in addition to above.

PRELIMINARY DD SET
 8/15/22
 NOT FOR CONSTRUCTION

BELFAST CO-OP RENOVATION
 123 High St. Belfast ME 04915
 Doug Johnson

A-121
 GROUND LEVEL FURNITURE
 PLAN



LIGHT FIXTURE TYPE LEGEND
1. See lighting schedule for more information

- Track Light
- Surface Mounted Linear
- Recessed Downlight
ID - See Lighting Schedule
- Exterior Wall Pack
- Exterior Recessed Downlight
- Surface Mounted Ceiling Fixture
- 1x4 Florescent Fixture
- Wall Mounted Sconce
- Pendant Fixture
- Emergency Fixture
- Suspended Track System
- TV/Cable

GENERAL NOTES:

- Contractor will review all drawings and specifications and confirm any unclear information with the Architect before proceeding. Sheets are not to be separated when distributed to subcontractors in order to maintain contextual information.
- Contractor is responsible for the construction of a complete weather tight building within the scope of the construction documents. If contractor feels conformance with the construction documents is in conflict with this goal he shall discuss conflicts with Architect.
- Contractor is responsible for coordinating and supervising all sub-contractors. Workmanship standards shall be those generally accepted for high-end construction. Contractor warrants all work for a minimum of one year from final completion of job. Other explicit warranties may be in addition to above.